



OFFICE/RETAIL SPACE FOR LEASE 1601 TANGLEWOOD AVE, HANOVER PARK, IL

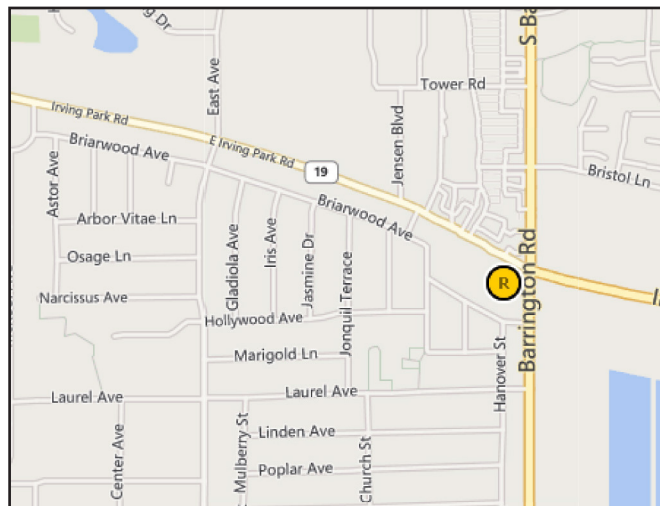


BUILDING FEATURES:

- 1,000-1,200 SF Available Immediately
- Join Other Professional and Medical Tenants
- Exposure on Barrington Rd
- Near Corner of Barrington Rd & Irving Park Rd
- Ample Parking
- Zoned B-2 Local Business District
- Built 1968
- Efficient Layouts for Office/Medical User
- Signage is Available on Building and/or Pylon Sign
- **Rental Rate: \$13-15 PSF Modified Gross**

AVAILABLE SPACE:

SUITE	SIZE (SF)	SPACE
100	1,000	Former Dental Office with Reception Area, 3 Operatories, Lab, & Private Office
101	1,000	Former Physical Therapist Space with Reception Area, 2 Private Offices, Open Area & Washroom
105	1,200	Medical Office Space with Reception & Waiting Area, 3 Exam Rooms (2 with sinks), Lab, & Washroom



FOR MORE INFORMATION:

RANDY OLCZYK
Direct: 847.246.9611
randy@chicagolandcommercial.com

RAY OKIGAWA
Direct: 847.246.9632
ray@chicagolandcommercial.com



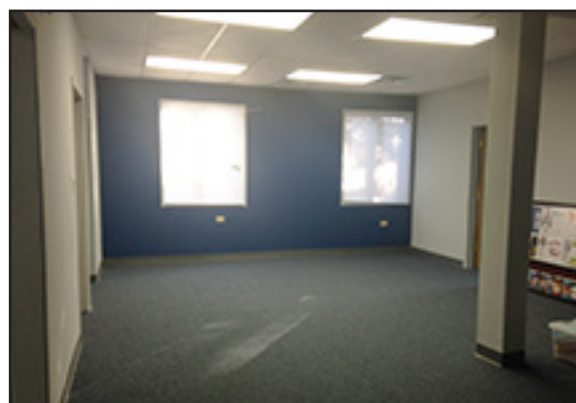
1240 W. Northwest Hwy., Palatine, IL 60067



OFFICE/RETAIL SPACE FOR LEASE

1601 TANGLEWOOD AVE, HANOVER PARK, IL

PHOTOS:



FOR MORE INFORMATION:

RANDY OLCZYK
Direct: 847.246.9611
randy@chicagolandcommercial.com

RAY OKIGAWA
Direct: 847.246.9632
ray@chicagolandcommercial.com



1240 W. Northwest Hwy., Palatine, IL 60067